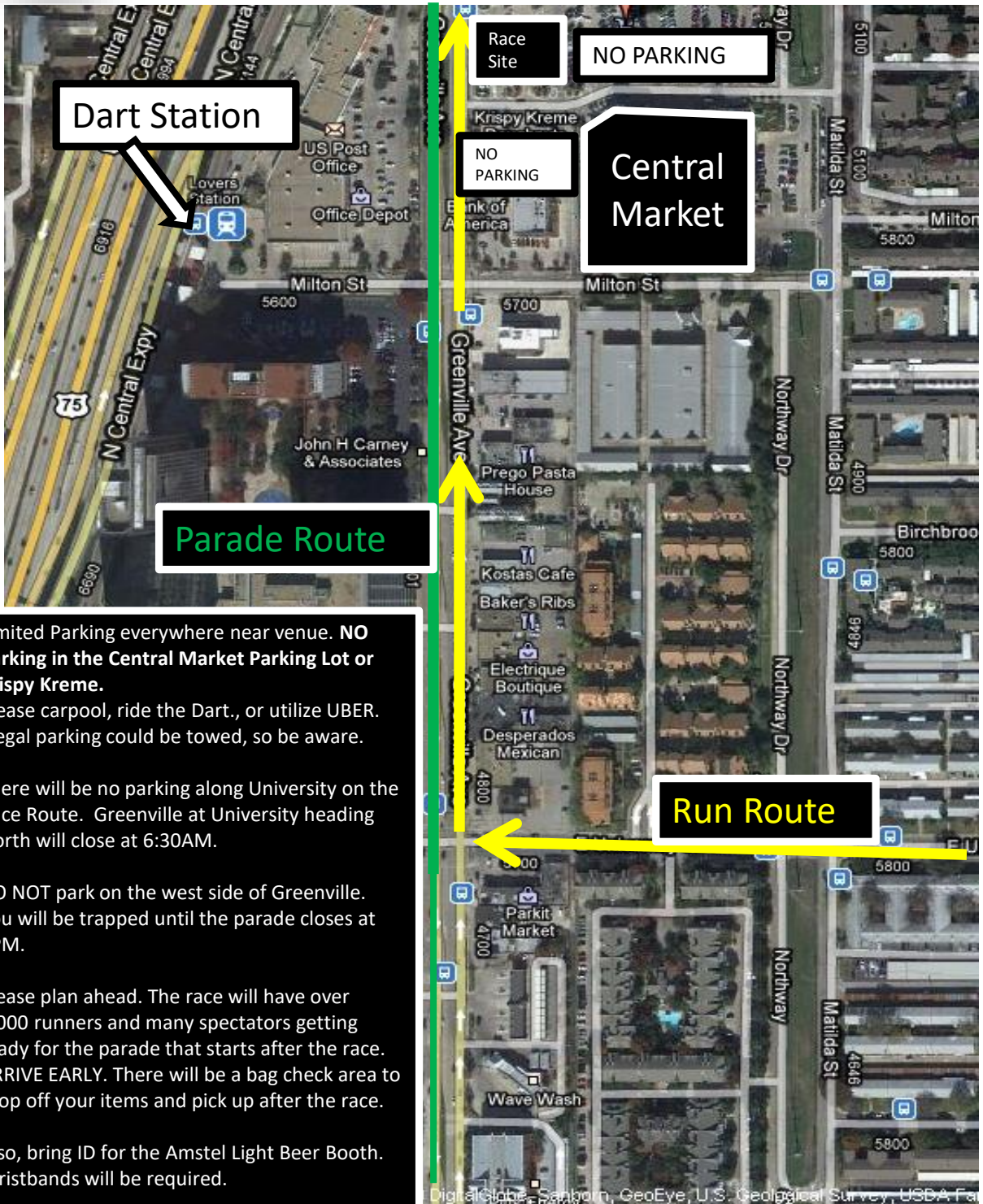




PARTICIPANT PARKING



Limited Parking everywhere near venue. **NO Parking in the Central Market Parking Lot or Krispy Kreme.**
Please carpool, ride the Dart., or utilize UBER. Illegal parking could be towed, so be aware.

There will be no parking along University on the Race Route. Greenville at University heading North will close at 6:30AM.

DO NOT park on the west side of Greenville. You will be trapped until the parade closes at 3PM.

Please plan ahead. The race will have over 5,000 runners and many spectators getting ready for the parade that starts after the race. **ARRIVE EARLY.** There will be a bag check area to drop off your items and pick up after the race.

Also, bring ID for the Amstel Light Beer Booth. Wristbands will be required.